



**Nexgen**  
Fabrics

**PLUSH**  

---

**LUXURY VELVET**



PH-101 - PEARL



PH-102 - ACORN



PH-103 - DRY ACORN



PH-104 - MINK



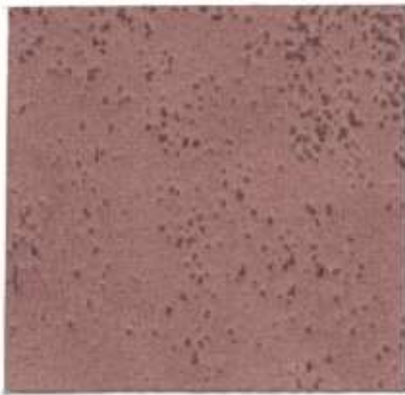
PH-105 - LAZY BROWN



PH-106 - DUSTY TRIAL



PH-107 - SCARLET



PH-108 - ROSY CORAL

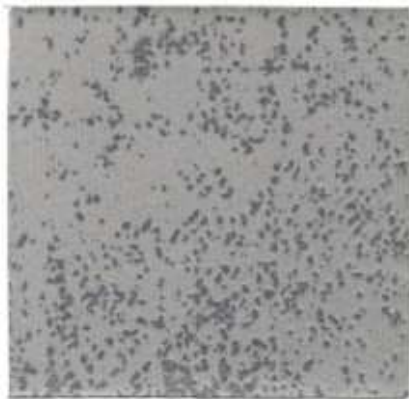


PH-109 - RED WOOD



PH-110 - BEIGE ACCENT





PH-111 - GREY CLOUD



PH-112 - SWEET CORN



PH-113 - TIARA



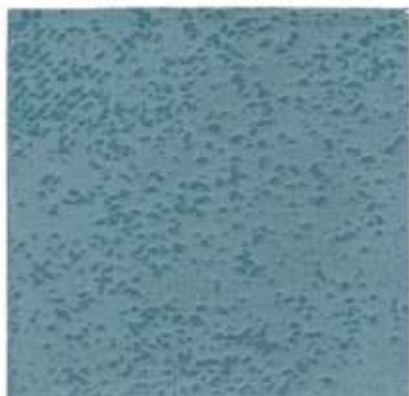
PH-114 - BARREN OAK



PH-115 - TEAL



PH-116 - DEEP DIVE



PH-117 - TWILIGHT



PH-118 - BLUE GLORY



PH-119 - MIDNIGHT BLUE



PH-120 - HAZEL NUT

# Technical Information

---

**Composition**  
100% Polyester

---

**Width**  
54 inches ±2%

---

**Weight**  
500 Grams/Meter ±5%

---

**Abrasion Resistance**  
60000 Cycles

---

**Color Fastness**  
Wet:4 , Dry: 5

---

**Color Matching**  
Batch to batch variations in shade may occur within commercial tolerances.

---

**Anti- Microbial / Anti-Fungal**  
AATCC 147

---

**Flammability**  
BS EN: 1021 part 1 & 2 (Cigarette & Match)  
BS 5852 Ignition Source 5 (Crib 5)  
CAL TB 117-2013  
NFPA 260/UFAC CLASS1  
NFPA 701  
BS 5867 Part 2 Type B  
\*Certificates available on request.

*Note: Flammability performance is dependent on components used. Our certificates show what substrates have been used in our tests. For composite tests customers must ensure their complete furniture meets the necessary standards.*

---

**Suitable For**  
Vertical Paneling & Seating.

---

**Cleaning**  
Vacuum regularly, Professionally dry clean or wipe clean with a damp cloth.

---